

Microsoft L2TP/IPSEC Client Interoperability Guide

Copyright © 2004, F/X Communications. All Rights Reserved. The use and copying of this product is subject to a license agreement. Any other use is strictly prohibited. No part of this publication may be reproduced, transcribed, or translated into any language, in any form by any means without the prior written consent of F/X Communications. Information in this document is subject to change without notice and does not constitute any commitment on the part of F/X Communications.

F/X Communications, Brolaeggerstraede 12, DK-4300 Holbaek, Denmark.

Contents

1. Microsoft L2TP/IPSec Client	3
1.1. Important notice	3
1.2. Brief step-by-step instructions	3
1.3. Configuring the L2TP/IPSec Client	3
1.4. Configuring the InJoy side	5
1.5. Connecting the L2TP/IPSec Client to InJoy	5
1.6. Getting L2TP/IPSec Client	5

1. *Microsoft L2TP/IPSec Client*

1.1. *Important notice*

The connections in the following tests were conducted over a LAN, using 192.168.x.x IP addresses for the IPSec endpoints. When modifying these samples for Internet use, replace the 192.168.x.x addresses with the external (public) IP addresses of the IPSec endpoints.

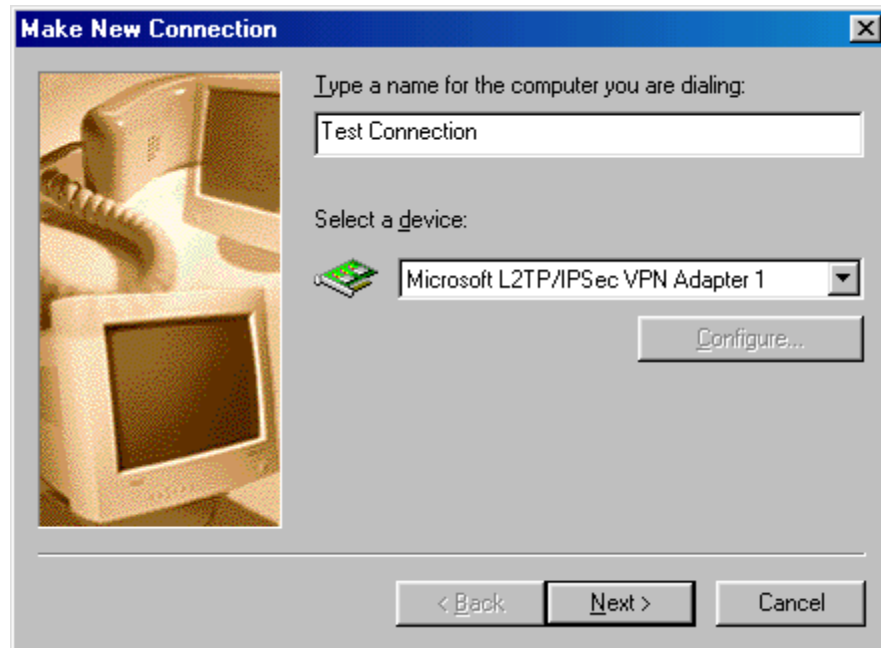
1.2. *Brief step-by-step instructions*

To create a VPN using the InJoy IPSec and the L2TP/IPSec Client, the following steps must be completed:

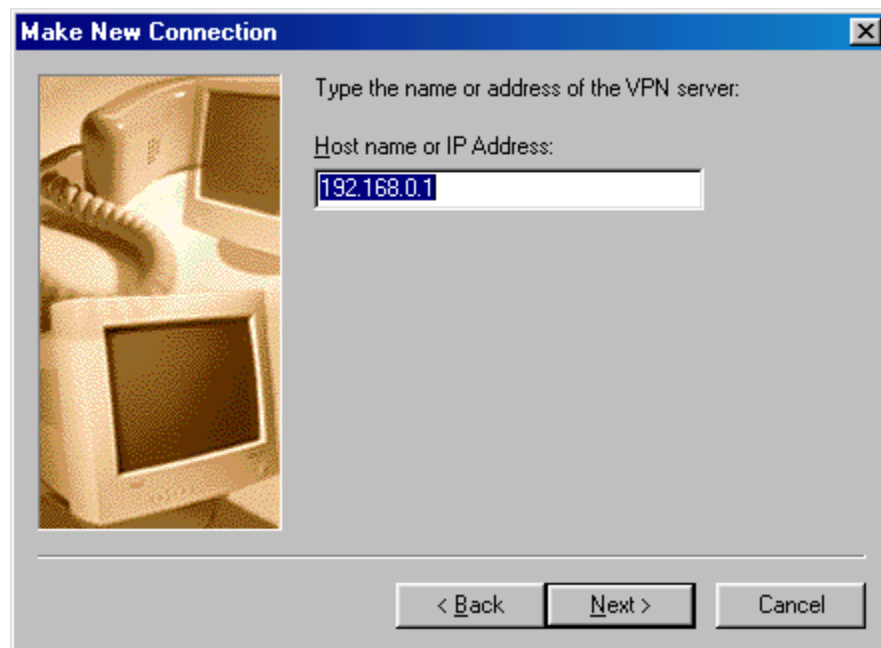
- 1 Install an InJoy product with IPSec ("**Remote Gateway**").
- 2 Install the Pluto IKE server on the InJoy PC.
- 3 Configure the L2TP/IPSec Client ("**Local Host**").
 - 3.1 Install the L2TP/IPSec Client
 - 3.2 Create a VPN connection
 - 3.3 Configure the L2TP/IPSec Client to authenticate itself with pre-shared secrets
- 4 Configure the InJoy IPSec side.
- 5 Restart the InJoy IPSec product and the IKE server.
- 6 Force the L2TP/IPSec Client to establish the SA.

1.3. *Configuring the L2TP/IPSec Client*

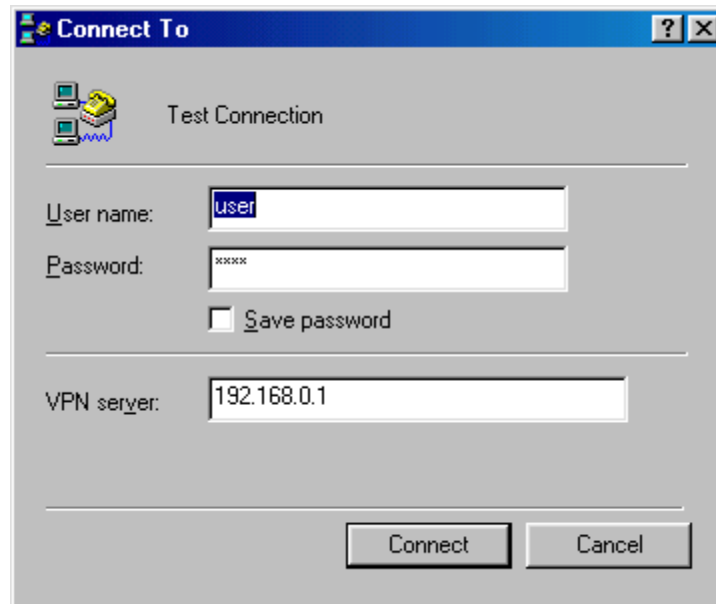
- 1 Install the Microsoft L2TP/IPSec Client (refer to the L2TP/IPSec Client documentation for more information). See section 1.6 of this document.
- 2 Click **Start**, click **Accessories**, point to **Communications**, and click **Dial-Up Networking**. Double-click **Make a New Connection**, type a name for the connection. In Select a device, choose **Microsoft L2TP/IPSec VPN Adapter**, and click **Next**.



- 3 In **Host name or IP Address**, type the DNS name or the IP Address of the InJoy VPN Server, and click **Next**. Click **Finish**.



- 4 Click **Start**, select the **Microsoft L2TP/IPSec Client**, choose **Configure Microsoft L2TP/IPSec Client**, select **Pre-shared Key Authentication**, enter pre-shared secret (**supersecret** in this example).
- 5 In **Dial-Up Networking** folder, open this just-created connection (**Test Connection**) and dial it (User name and Password have no significance in this setup – they can be left blank or with dummy values).



1.4. *Configuring the InJoy side*

On the Remote Gateway add the following section to the file ipsec.cnf, to describe the SA to the L2TP/IPSec client:

```
mssl2tp
Description = "Microsoft L2TP/IPSec Client",
Mode = Tunnel,
Local-IP = "192.168.0.1",      # local gateway IP address
Remote-IP = "0.0.0.0",       # remote host IP address
AH = No,
ESP = DES,
Reinit = No,
Preshared-Secret = "supersecret",
```

Restart the InJoy IPsec product and the Pluto IKE server for changes to take effect.

1.5. *Connecting the L2TP/IPSec Client to InJoy*

To connect to the InJoy side, the user must first connect to the Internet and then dial the L2TP/IPSec Connection.

The L2TP/IPSec Client can work as a RoadWarrior for InJoy, however, InJoy cannot be a RoadWarrior for the L2TP/IPSec Client.

1.6. *Getting L2TP/IPSec Client*

To install the L2TP/IPSec client, download the Windows Dial-Up Networking upgrade and the L2TP/IPSec client itself. The links are below.

Dial-Up Networking available here:

<http://support.microsoft.com/default.aspx?scid=KB;en-us;q285189>

L2TP/IPSec client available here:

<http://download.microsoft.com/download/win98/Install/1.0/W9XNT4Me/EN-US/mssl2tp.exe>

An article about the L2TP/IPSec client and its setup can be found here:

<http://www.microsoft.com/windows2000/server/evaluation/news/bulletins/l2tpclient.asp>